

Serial Device Server

CSE-H20 User's Manual

Version 1.8

2009-07-13



Sollae Systems Co., Ltd.

<http://www.sollae.co.kr>



To all residents of the European Union

Important environmental information about this product

This symbol on this unit or the package indicates that disposal of this unit after its lifecycle could harm the environment. Do not dispose of the unit as unsorted municipal waste; it should be brought to a specialized company for recycling. It is your responsibility to return this unit to your local recycling service. Respect your local environmental regulation. If in doubt, contact your local waste disposal authorities.

Contents

CONTENTS	- 2 -
1 OVERVIEW.....	- 5 -
1.1 Overview	- 5 -
2 SPECIFICATIONS	- 6 -
2.1 Components.....	- 6 -
2.2 Specifications	- 6 -
2.3 Interface.....	- 7 -
2.3.1 Serial Ports (RJ45).....	- 7 -
2.3.2 Ethernet Interface	- 9 -
2.3.3 Power.....	- 9 -
2.3.4 System LEDs	- 10 -
2.3.5 ISP Switch	- 10 -
3 INSTALLATION AND TEST RUN.....	- 11 -
3.1 Installation Method.....	- 11 -
3.1.1 Checking the Communication Environment	- 11 -
3.1.2 Connecting to the Network.....	- 11 -
3.1.3 Configuring the Environmental Variables	- 12 -
3.2 Test Run	- 12 -
3.2.1 Changing PC IP Address	- 12 -
3.2.2 Installing CSE-H20.....	- 12 -
3.2.3 Configuring CSE-H20.....	- 12 -
3.2.4 Communication Test.....	- 13 -
4 CONFIGURING IP ADDRESS VARIABLES	- 16 -
4.1 IP Address and Environmental Variables.....	- 16 -
4.2 Configuring with ezManager.....	- 16 -
4.2.1 ezManager	- 16 -
4.2.2 Buttons of ezManager.....	- 17 -
4.2.3 Parameters of ezManager.....	- 17 -
4.2.4 Matters to be attended to	- 18 -
4.3 AT command.....	- 18 -
4.4 IP Address Related Categories Settings via DHCP	- 18 -
4.5 IP Address settings via PPPoE	- 19 -
4.6 Notify IP Change.....	- 19 -

4.6.1	DDNS (Dynamic Domain Name System).....	- 19 -
4.6.2	TCP/UDP.....	- 19 -
5	OPERATION MODE.....	- 20 -
5.1	Operation Mode Overview.....	- 20 -
5.1.1	Overview.....	- 20 -
5.2	How to Initiate Each Operation Mode.....	- 20 -
5.2.1	How to Initiate the Normal Mode.....	- 20 -
5.2.2	How to Initiate the Serial Configuration Mode.....	- 20 -
5.2.3	How to Initiate the ISP Mode.....	- 20 -
5.2.4	Comparison of Operation Modes.....	- 20 -
5.3	Normal Communication Mode.....	- 21 -
5.4	Serial Configuration Mode.....	- 21 -
5.5	ISP Mode.....	- 21 -
5.5.1	Upgrading Firmware.....	- 21 -
6	NORMAL COMMUNICATION MODE.....	- 23 -
6.1	T2S – TCP Server.....	- 23 -
6.1.1	TCP Connection.....	- 23 -
6.1.2	Serial Data before the TCP Connection.....	- 23 -
6.1.3	Data Transmission.....	- 23 -
6.1.4	Disconnection.....	- 24 -
6.2	COD – TCP Client.....	- 25 -
6.2.1	Serial Data before the TCP Connection.....	- 25 -
6.2.2	Data Transmission.....	- 25 -
6.2.3	Disconnection.....	- 25 -
6.2.4	DNS.....	- 26 -
6.3	ATC.....	- 27 -
6.4	U2S.....	- 28 -
7	ATC MODE.....	- 29 -
7.1	Overview.....	- 29 -
7.1.1	AT command format.....	- 29 -
7.2	Basic AT Command Set (Example: ATA, ATD etc.).....	- 29 -
7.3	Extended AT Commands (Example: AT+PLIP etc.).....	- 30 -
7.4	Online State and AT Command State.....	- 30 -
7.4.1	Changing Online State to AT Command State.....	- 31 -
7.4.2	Changing AT Command State to Online State.....	- 31 -
7.5	Example of Configuration with AT Command.....	- 31 -
7.6	Example of TCP Connection.....	- 31 -

7.6.1	Example of Active Connection	32	-
7.6.2	Example of Active Connection with host name	32	-
7.6.3	Example of passive Connection	32	-
7.7	Example of TCP Disconnection	33	-
7.7.1	Example of active disconnection	33	-
7.7.2	Example of passive disconnection	33	-
8	SECURITY PROTOCOLS & OPTION	34	-
8.1	SSL	34	-
8.1.1	SSL (Secure Socket Layer)	34	-
8.1.2	How to set the SSL on CSE-H20	34	-
8.1.3	Restriction	35	-
8.2	SSH	35	-
8.2.1	SSH (Secure Shell)	35	-
8.2.2	How to set the SSH on CSE-H20	35	-
8.2.3	Restriction	36	-
8.3	ezTCP Firewall	36	-
9	CHECKING & DEBUGGING	38	-
9.1	Telnet	38	-
9.1.1	Telnet Login	38	-
9.1.2	Commands	38	-
9.2	Status on ezManager	40	-
9.2.1	Status of the CSE-H20	40	-
9.2.2	Closing TCP connection by the ezManager	40	-
9.3	Remote Debugging	41	-
10	TECHNICAL SUPPORT, WARRANTY, AND NOTES ON OPERATION	42	-
10.1	Technical Support	42	-
10.2	Warranty	42	-
10.2.1	Refund	42	-
10.2.2	Free Repair Services	42	-
10.2.3	Charged Repair Services	42	-
10.2.4	Notes on Operation	42	-
11	REVISION HISTORY	44	-

1 Overview

1.1 Overview

Along with the development of the Internet, the demand for data communication functions has increased recently. Data communication over the Internet requires using TCP/IP, the Internet communication protocol. That is to say, in order to connect a system to the Internet, TCP/IP protocol must be implemented. It is possible to implement TCP/IP by directly implementing the protocol, porting public TCP/IP, or using Operating System (OS). However, all these methods impose burdens on the developer in time, cost, and technology.

ezTCP series, a Serial ↔ TCP/IP protocol converter product group of Sollae Systems, enables you to use TCP/IP communication (the Internet communication) function simply by "connecting the cable to a serial port". ezTCP sends data from the serial port to the Internet network after TCP/IP processing, and vice versa.

CSE-H20 in ezTCP product group is a product that provides TCP/IP communication through Ethernet. In other words, like other ezTCP products, CSE-H20 sends data from the serial port to the LAN after TCP/IP processing and vice versa.

As CSE-H20 has 2 RS232 ports, it can be connected to two RS232 devices in the same time. And it is easy CSE-H20 to attach to user systems because of its compact size.

It provides DHCP and PPPoE functions, so that it can be applied to the cable network and the xDSL network. And it has DDNS (Dynamic DNS) function, so it can be used more easily in the internet.

It also provides debugging function, so user can solve the problem with ours.

2 Specifications

2.1 Components

- CSE-H20 Body
- 5V Power Adopter (Option)
- RS232C cable for PC connection - RJ45-DB9F-1M (Option)
- RS232C cable for user device connection - RJ45-DB9M-1M (Option)
- Cross-over Ethernet cable (Option)
- DIN rail adopter (Option)

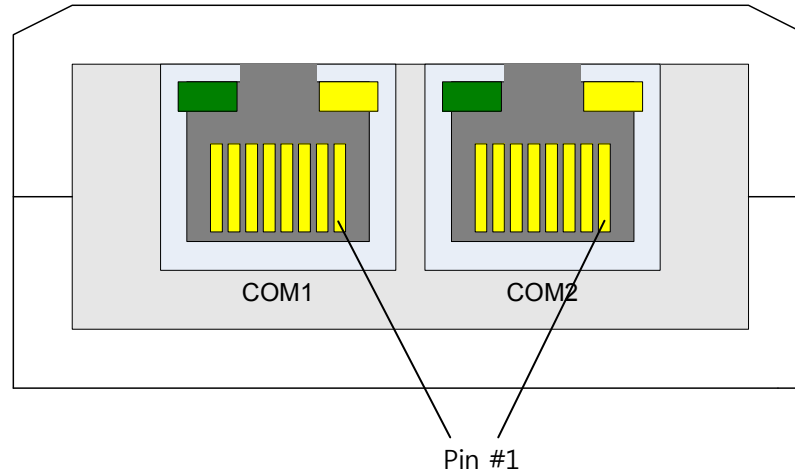
2.2 Specifications

Power	Input Voltage	5V (±10%)
	Current	200mA typical
Dimension	87mm x 57mm x 24mm	
Weight	About 70g	
Interface	Serial	RJ45 x 2
	Network	10/100 Base T (RJ45)
Serial Port	2 x RS232 (1200bps ~ 230400bps, RTS/CTS flow control)	
Network	Ethernet 10/100 M bit auto-sense Auto MDI/MDIX	
Protocols	TCP, UDP, IP, ICMP, ARP, DHCP, PPPoE DNS lookup, Dynamic DNS(DDNS) Telnet COM Port Control Option (RFC2217) SSL, SSH	
Diagnostic	Online Debugging Function	
RoHS	RoHS Compliant	
Approvals	CE: F690501/SP-EMC000979 FCC: STK-07-EMCG0122 MIC: SLS-CSE-H20	
Communication Mode	T2S	TCP Server Mode
	COD	TCP Client Mode
	ATC	TCP Server/Client (AT command emulation)
	U2S	UDP
Utilities	ezManager	Configuration utility via LAN

	ezterm	Socket test utility
	hotflash	Firmware download utility via TFTP
	ezVSP	Serial-TCP/IP virtual driver for Windows

2.3 Interface

2.3.1 Serial Ports (RJ45)



- RS-232

number	name	description	level	Dir.	Etc.
1	RTS	Request To Send	RS232	Output	Optional
2	DTR	Data Terminal Ready	RS232	Output	Optional
3	TXD	Transmit Data	RS232	Output	Mandatory
4	GND	Ground	Ground	-	Mandatory
5	GND	Ground	Ground	-	Mandatory
6	RXD	Receive Data	RS232	Input	Mandatory
7	DSR	Data Set Ready	RS232	Input	Optional
8	CTS	Clear To Send	RS232	Input	Optional

- LEDs of Serial Port

Condition	Color	Operation
TCP disconnected	Green	OFF
	Yellow	
TCP connected	Green	As same as CTS (on: CTS active) Blinks if CSE-H20 gets data from the serial port.
	Yellow	As same as RTS(on: RTS active)

		Blinks if CSE-H20 sends data to the serial port.
UDP Mode	Green	As same as CTS (on: CTS active) Blinks if CSE-H20 gets data from the serial port.
	Yellow	As same as RTS(on: RTS active) Blinks if CSE-H20 sends data to the serial port.

- Data bits, Parity, and Stop bit

Item	Configurable Value
Data bit	8, 7, 6, 5
Parity	None, Even, Odd, Mark, Space
Stop bit	1, 1.5, 2

- Flow Control

CSE-H20 support RTS/CTS Hardware Flow Control.

- Telnet COM Port Control Option

CSE-H20 has Telnet COM Port Control Option function that is specified by RFC2217. If the Telnet COM Port Control Option is enabled, CSE-H20 sends the CTS, DSR control signal to the communication counterpart, and CSE-H20 sets its serial port items (RTS, DTR, Baud rate, data bits, parity, stop bit) after getting information from the communication counterpart.

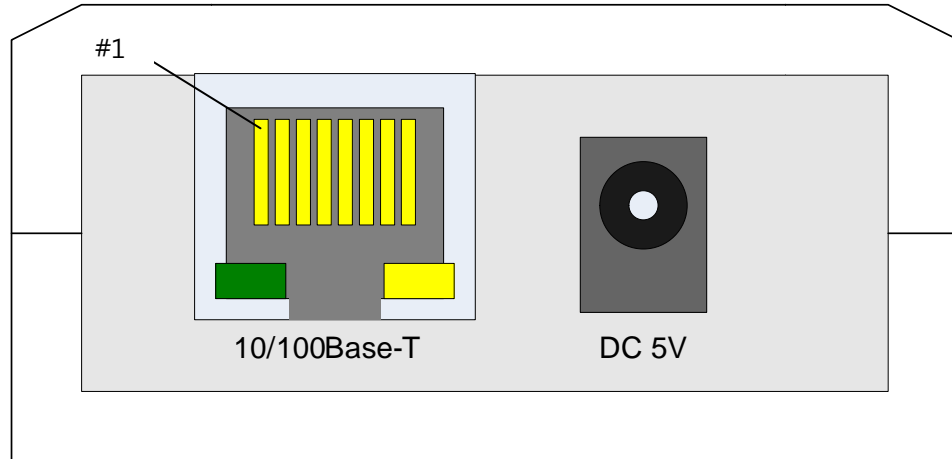
- TX Delay

CSE-H20 has a function that delays its serial data for the user's slow device. User can set the interval between byte and byte which are outputting from CSE-H20's serial ports. Its unit is byte.

2.3.2 Ethernet Interface

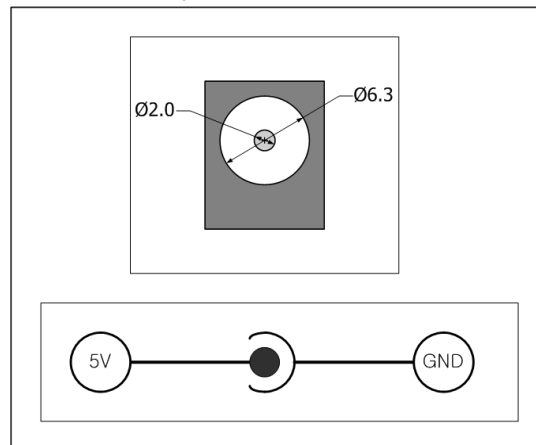
Network part of CSE-H20 is configured with Ethernet. So, what you have to do is only to connect UTP cable. The Ethernet part detects 10Mbit or 100Mbit Ethernet automatically, to connect the corresponding cable. It also provides auto MDI/MDIX function to detect 1:1 cable or cross-over cable automatically.

Each piece of Ethernet equipment has unique hardware addresses, and CSE-H20 also has factory-set hardware address (which is called MAC address).



2.3.3 Power

DC 5V is used for CSE-H20 and the specification is below:



2.3.4 System LEDs

CSE-H20 has 5 system LEDs.

- System LEDs

Mode	Name	Color	LED Status	Description
Common	PWR	Red	ON	Power is supplied.
	LINK	Green	ON	Connected to 100M Ethernet.
		Red	ON	Connected to 10M Ethernet.
	RXD	Yellow	Blinking	There are data on the LAN
	TXD	Green	Blinking	Packets are being transmitted to Ethernet
Normal mode	STS	Yellow	Blinks in every second	IP is allocated but TCP connection is not established.
			Blinks 4 Times/sec	Dynamic IP is not allocated.
ISP mode	STS	Yellow	OFF	CSE-H20 is in the ISP mode
Serial Configuration mode	RXD/ TXD/ STS	-	Blink 2 Times/sec at one time	CSE-H20 is in the Serial Configuration mode

2.3.5 ISP Switch

There is an ISP switch on the side. If this switch is push 20ms~1s, it operates as Serial Configuration Mode. If this switch is push over 1 second, CSE-H20 operates as ISP mode. User can do firmware download to the CSE-H20 in the ISP mode. Please refer to 4.2 for more information on firmware download.

3 Installation and Test Run

3.1 Installation Method

You can install CSE-H20 in the following steps.

Title	Item	Sub-item
1. Checking the communication environment	Check items	IP address environment
		Serial port settings
		Application program to be used
2. Connecting to the network	Check method	Check if LINK LED is ON.
3. Configuring the environmental variables	Configuration method	Set by ezManager, a utility program for configuration through the network.
		Set by AT commands in ATC mode
	Configuration items	IP address related items
		Serial port related items
		Communication mode (depending on application program)
4. Application to the field		

3.1.1 Checking the Communication Environment

Before installing CSE-H20, check the network environment where CSE-H20 is to be installed, including the followings matters:

- IP address environment (local IP, subnet mask, gateway, DHCP/PPPoE etc.)
- Serial port type of the equipment to which CSE-H20 is going to be connected (RS232)
- Serial port items of the equipment to which CSE-H20 is going to be connected (baud rate, data bit, parity, stop bit, flow control)
- Application program protocol to be used (TCP/UDP, server/client, etc.)
- Security function (SSL, SSH, etc.)

3.1.2 Connecting to the Network

Connect power to CSE-H20, and connect CSE-H20 either directly to the Ethernet port of

the PC where test is to be performed or to the network (hub) to which the PC is connected.

3.1.3 Configuring the Environmental Variables

When network connection is completed, configure the environmental variables such as IP address related items, serial port related items, and communication mode related items through the LAN using "ezManager" the environmental variable configuration program.

3.2 Test Run

You can perform test run according to the following orders. The test run described here is based on the assumption that the IP address of the PC is set to 10.1.0.2

3.2.1 Changing PC IP Address

You can change the IP address of your PC as follows:

IP Address	10.1.0.2
Subnet Mask	255.0.0.0
Gateway IP Address	-

3.2.2 Installing CSE-H20

Connect the supplied RS232 cable (RJ45-DB9F-1M) between your PC and CSE-H20, the LAN cable to the hub to which the PC is connected or directly to the PC, and the supplied CSE-H20 power adapter to CSE-H20 for power supply. If the LAN cable has been correctly connected when power is supplied, LINK LED turns on.

3.2.3 Configuring CSE-H20

Configure CSE-H20 setting using ezManager, the ezTCP configuration program, as follows.

Run ezManager, and click [Search All] button in the ezManager window. And, ezManager program will search all CSE-H20s on the local network.

When ezTCP is searched, MAC address of the ezTCP is displayed on the [Search Result] window (The MAC address is indicated at the bottom of the product case).

Select the corresponding MAC address, and set the variables considering your network environment.

When no ezTCP is found, check the Windows firewall. If you press [Windows Firewall] button in the ezManager, you can see the Windows Firewall menu directly.

For simple test, we recommend that the variables keep default values as shown in the

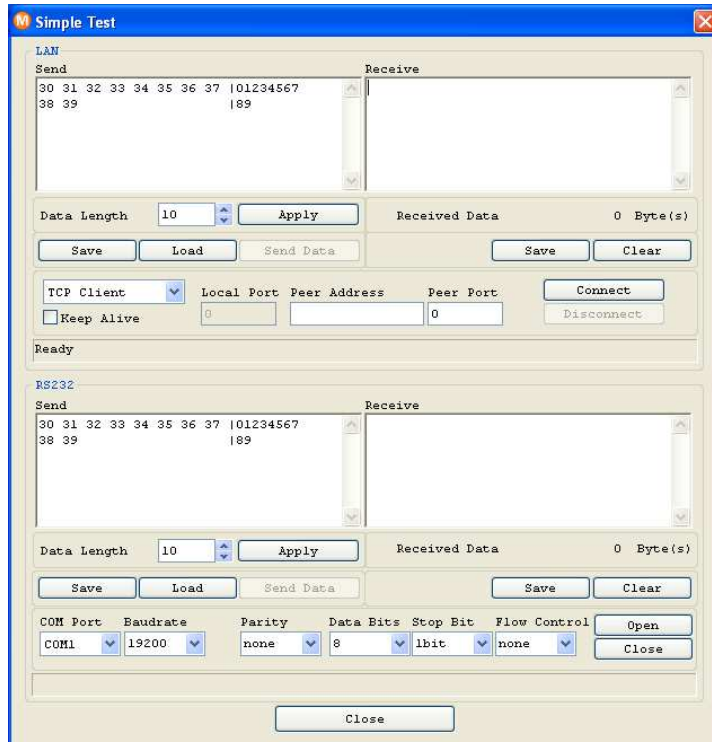
below table.

Parameter		Value
Network	Local IP Address	10.1.0.1
	Subnet Mask	255.0.0.0
Option	Telnet	Enabled
	IP Address Search	Enabled
Serial Port (COM1/2)	Serial Type	RS232
	Baud Rate	19200bps
	Parity	NONE
	Data Bits	8
	Stop Bit	1
	Flow	NONE
	Communication Mode	T2S – TCP Server
	Local Port	1470/1471

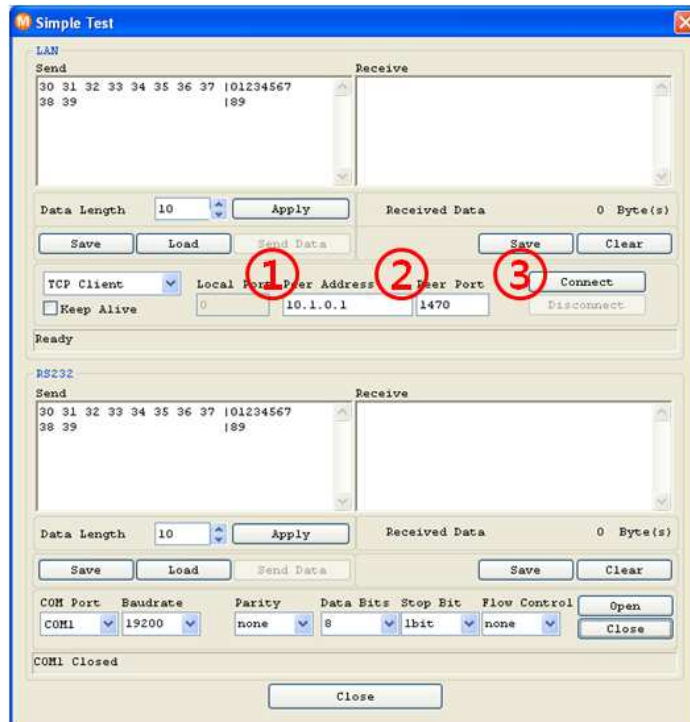
3.2.4 Communication Test

Power the CSE-H20 off and on, then it tries to connect to the LAN.

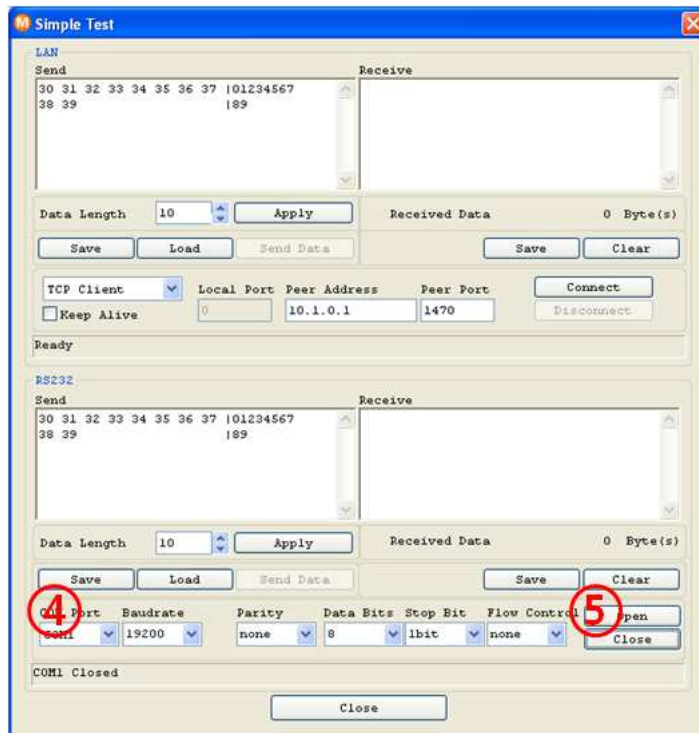
- A program for testing starts if you press the [Simple Test] button of the ezManager.



- Press the [Connect] button after inputting 10.1.0.1 and 1470 in the IP and Port. If the TCP connection is established there will be "Connected [10.1.0.1 : 1470]." And the STS indicator will be on.

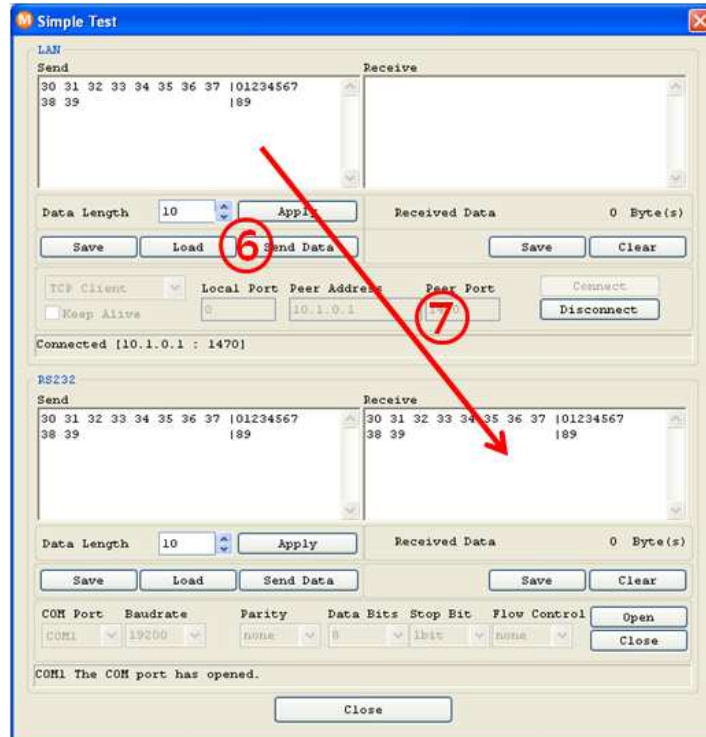


- Press the [Open] button after selecting serial port that is connected to the CSE-H20. If the serial port is open, the "COM1 the COM port has opened" message will be shown.

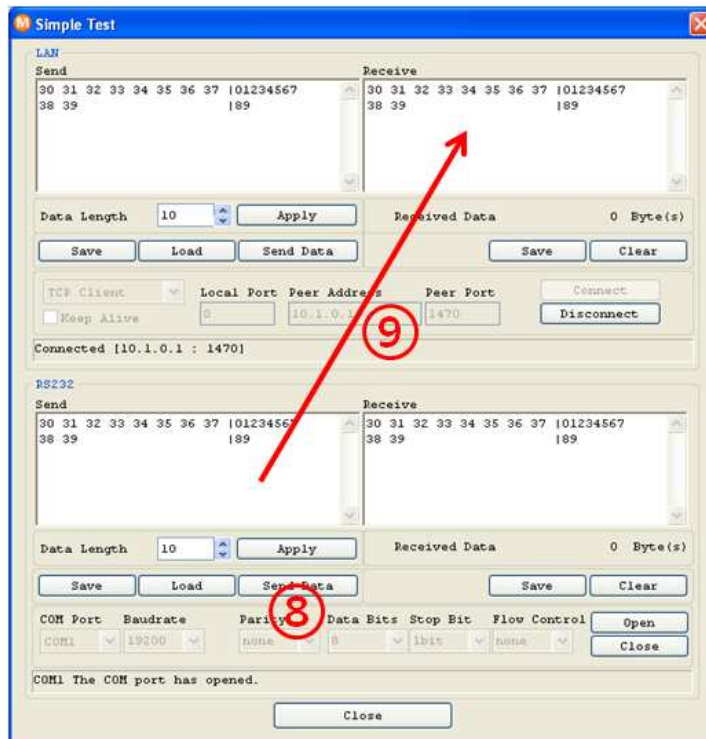


- If you press the [Send Data] button on the LAN part (Top), the data shown in the

[Send] box will be transmitted to the [Receive] box on the RS232 part (Bottom).



- If you press the [Send Data] button on the RS232 part (Bottom), the data shown in the [Send] box will be transmitted to the [Receive] box on the LAN part.



- If the transmitting and receiving data are same, the communication test is successful.

4 Configuring IP Address Variables

4.1 IP Address and Environmental Variables

For TCP/IP communication, you must set IP address related items. In addition, you have to set serial port related items (serial port type, communication speed, data bit length, parity bit, flow control, etc) to CSE-H20.

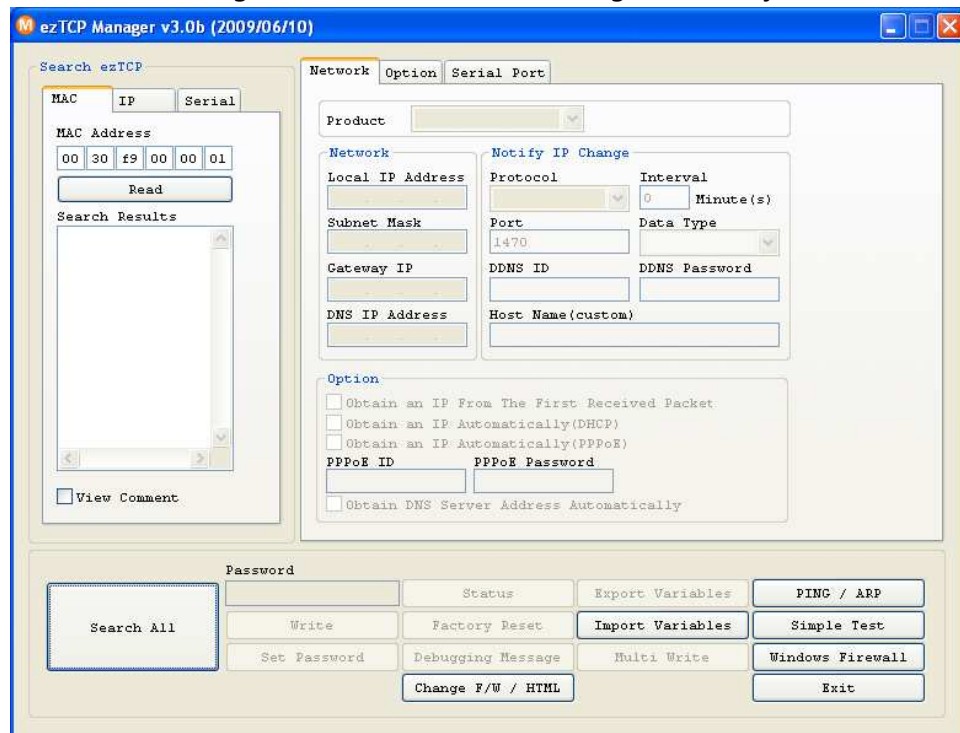
You can set the IP address and the serial port related items by using ezManager, the supplied configuration utility which allows you to configure your CSE-H20 over the network, or by using AT commands in ATC mode.

4.2 Configuring with ezManager

4.2.1 ezManager

The basic environmental variables (IP address related items, serial port items, and etc.) can be set by ezManager which is an integrated management tool for Windows.

ezManager is operated in Microsoft Windows(Windows 98, 98 SE, 2000 Pro, ME, XP Pro/Home, Vista). Following is the screen shot of ezManager which is just launched.



ezManager communicates UDP broadcast and its UDP ports are 50005 and 50006. Port number 50005 is for setting and port number 50006 is for debugging. If you use any firewall function, the ports have to be opened.

4.2.2 Buttons of ezManager

Button	Description
Read	Read the values configured through MAC or IP address.
Write	Store the changed values of parameters
Set Password	Set or remove the password by this button.
Status	Check the status of ezTCP in real time.
Factory Reset	Initialize all the values as a default.
Debugging Message	Make the ezTCP broadcast debugging messages.
Change F/W / HTML	Change the firmware or HTML files with this button.
Export Variables	Store a set of values as a file.
Import Variables	Load values from a file made from [Export Variables]
Multi Write	Configure a set of values to one or more ezTCP
PING/ARP	Test the PING reply and manage the ARP table.
Simple Test	Run the test program interfaced with Network and RS232 port.
Windows Firewall	Run the windows firewall set window.
Exit	Exit ezManager

4.2.3 Parameters of ezManager

Tap	Section	Parameters
Network	Network	Local IP Address, Subnet Mask, Gateway IP, DNS IP Address
	Notify IP Change	Protocol, Interval, Port, Data Type, DDNS ID, DDNS Password, Host Name(dyndns/custom)
	Option	Obtain an IP From The First Received Packet, Obtain an IP Automatically (DHCP), Obtain an IP Automatically (PPPoE), PPPoE ID, PPPoE Password, Obtain DNS Server Address Automatically
Option	Option	Telnet, IP Address Search, Send MAC Address, Debugging Message, SSL, SSH, Multiple Connection
	ezTCP Firewall	Allowed MAC Address, Allowed IP Range, IP Address, Network Mask, Apply To ezManager
Serial Port	Serial Port	Serial Type, TTL, Baud Rate, Parity, Data Bits, Stop Bit, Flow Control, DTR/DSR, TX Interval

	TCP/IP	Communication Mode, Peer Address, Peer Port, Local Port, Event Byte, Timeout, Data Frame
--	--------	--

4.2.4 Matters to be attended to

ezManager can be used when you want to change your device's environment variables. In case of CSE-H20, two interfaces are supported and those are Ethernet and RS232 port.

- Using Ethernet Port

For use ezManager through Ethernet, CSE-H20 should be connected with PC on networks. If they are located at the same network, [Search All], on the [MAC] tap, could be used with MAC address. If they are connected on Internet, [Read], on the [IP] tap, could be used.

- Using RS232 Port

For use ezManager through RS232, not only the CSE-H20 should be connected to PC with RS232 cross cable but also has to be operated as serial configuration mode.

4.3 AT command

In ATC mode, the user can set environment variables through the serial port using AT command.

☞ For more information, See "7. ATC Mode".

4.4 IP Address Related Categories Settings via DHCP

In the network environment composing DHCP server, settings related to CSE-H20's IP address, subnet mask, gateway, and name servers can be automatically designated using DHCP protocol. In order to do so, user must check [Obtain an IP Automatically (DHCP)] category on ezManager. Depending on DHCP server type, [Obtain an IP from the First Received Packet] category should also be checked as well.

Option

☐ Obtain an IP From The First Received Packet

☒ Obtain an IP Automatically(DHCP)

☐ Obtain an IP Automatically(PPPoE)

PPPoE ID PPPoE Password

☒ Obtain DNS Server Address Automatically

4.5 IP Address settings via PPPoE

PPPoE is used in most ADSL and VDSL. To use PPPoE function, PPPoE function should be enabled and PPPoE ID and PPPoE password should be configured. The local IP address of CSE-H20 is assigned automatically in PPPoE environment.

☞ Some ADSL or VDSL environment uses DHCP based on the modem type. Please contact your internet service provider for further information.

4.6 Notify IP Change

In internet environment, most host get IP addresses dynamically. In this case, it is very hard to communicate to the host because the IP address is changed dynamically. The IP Change Trap service solves this problem. There are 3 types- DDNS, TCP and UDP- for this service.

4.6.1 DDNS (Dynamic Domain Name System)

If the CSE-H20 obtains its IP address, it notices to the service provider. Then the service provider serves DNS service. So, even though user doesn't know the CSE-H20's IP address, user can connect to the CSE-H20 by the host name (after DNS looking up.) The DDNS service provider that the CSE-H20 supports is only DynDNS (<http://www.dyndns.com>) currently.

4.6.2 TCP/UDP

In addition, CSE-H20 can transmit some information to user's TCP/UDP servers each period which is set. This information is IP address, MAC address, product ID, firmware version, and comment. The data can be sent as either ASCII or Hexadecimal type.

☞ For more details about the Notify IP Change, please refer to the document on our web site.

☞ For more details about the ezManager, please refer to the manual of ezManager on our web site.

5 Operation Mode

5.1 Operation Mode Overview

5.1.1 Overview

CSE-H20 can operate in one of three modes (normal, serial configuration, and ISP modes). Normal mode is ordinary data communication mode; and serial configuration mode is a configuration mode through the serial port; and ISP mode is used to download CSE-H20 firmware through the Ethernet port.

5.2 How to Initiate Each Operation Mode

5.2.1 How to Initiate the Normal Mode

Normal mode is a mode in which CSE-H20 performs its original functions.

☞ For more information, see "6. Normal Communication Mode."

5.2.2 How to Initiate the Serial Configuration Mode

Pressing the ISP button for the time between 20ms and 1000ms (1sec), CSE-H20 works in the serial configuration mode.

5.2.3 How to Initiate the ISP Mode

If user press the ISP button hen CSE-H20 boots up or user press the button over 1 second in the normal mode, it operates as ISP mode that is firmware download mode.

5.2.4 Comparison of Operation Modes

The following table is the comparison of the above described operation modes.

Mode	How to Initiate	Description	Serial Port Communication Speed
Normal	ISP- pin open Or Pull-up	Normal data communication mode T2S, ATC, COD, U2S	User setting
Serial Configuration	Pressing the ISP button for 20ms ~ 1000ms	Configuring the environmental variables through the serial port.(COM1)	115200bps,N,8,1 Using the COM1 port
ISP	Pressing the ISP button when it boots up or	Download firmware through the Ethernet port Disabled all security	115200bps,N,8,1 Using the COM1 port

	pressing over 1 second.	functions	
--	-------------------------	-----------	--

5.3 Normal Communication Mode

Normal communication mode is suitable for the purpose of using CSE-H20.

Normal communication mode can be classified into four modes – T2S, ATC, COD, and U2S – each of which is described in the following table.

Communi- cation Mode	Protocol	Connection	Need for User Equipment Software Modification	Configuration of Environmental Variables through Serial Port	Topology
T2S	TCP	Passive Connection	Not needed	Impossible	1:1
ATC	TCP	Active/Passive Connection	Needed	Possible	1:1
COD	TCP	Active Connection	Not needed	Impossible	1:1
U2S	UDP	No Connection	Not needed	Impossible	N:M

TCP protocol requires connection process. The connection is always established as 1:1 connection. At this time, the host waiting for connection (passive connection) is called a server and the one attempting to connect (active connection) is called a client.

On the other hand, UDP communicates by block unit without connection process. As UDP does not require connection, numbers of hosts can communicate at the same time.

5.4 Serial Configuration Mode

This mode is for configuration under condition which the network is unavailable. When entering this mode, parameters of CSE-H20 can be set by its COM1 port. [Serial] tap on the ezManager let users do this.

5.5 ISP Mode

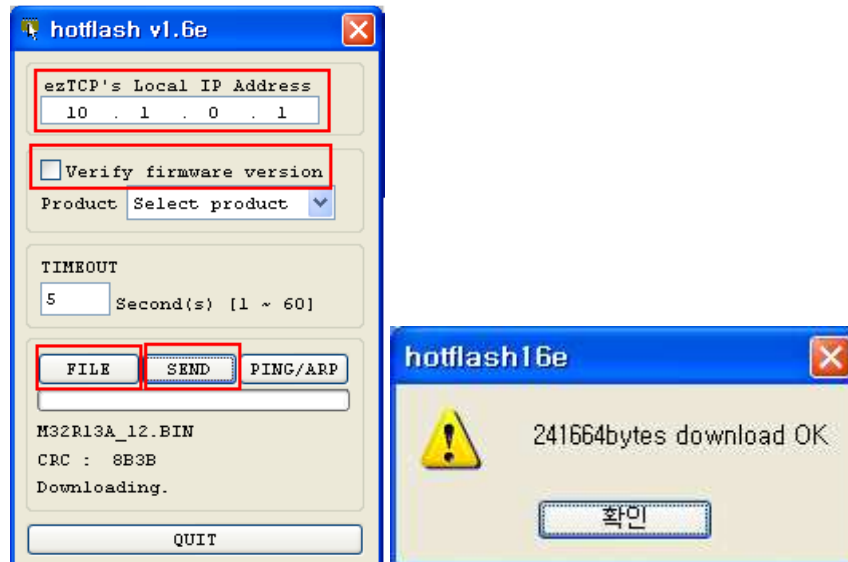
5.5.1 Upgrading Firmware

In ISP mode, you can download a firmware (CSE-H20 operation software) provided by our company. There is another thing in this mode. If you forget your password set before, you can reset it by entering this mode. In ISP mode, all the security options including ezTCP firewall are removal.

The following is the firmware downloading procedure.



- Supply power with pressing ISP button or push the button over 1 second, then CSE-H20 operates in the ISP mode.
- Run hotflash that is supplied by us and input IP address of CSE-H20 and select the firmware with the [FILE] menu. Then, send it with [SEND] button. (Uncheck the [Verify firmware version] option.)



- When the downloading is completed, CSE-H20 automatically reboots and enters normal mode.

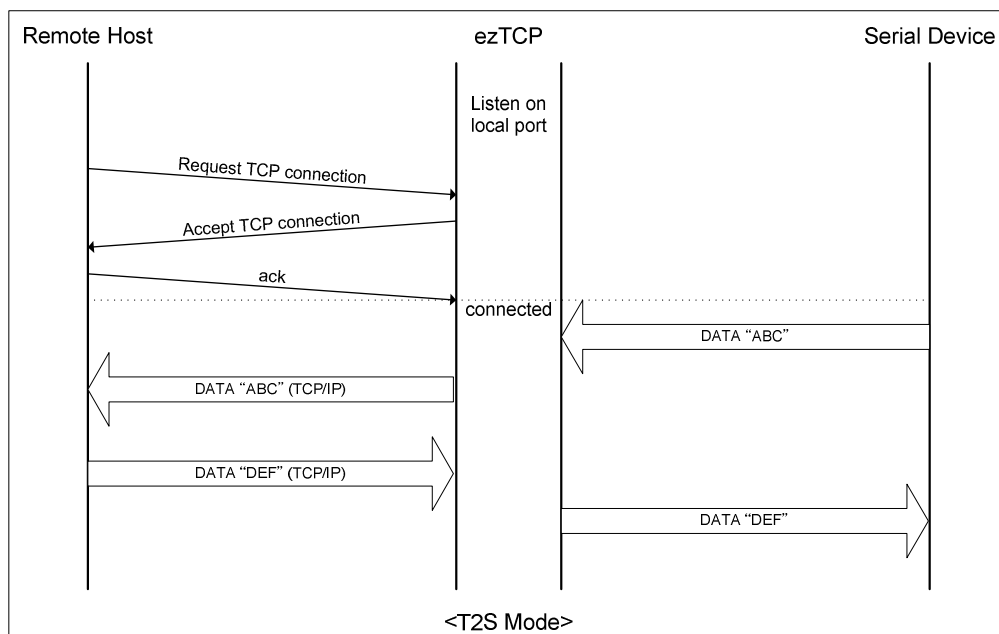
☞ *Firmware download can be implemented with ezManager whose version is 3.0A or subsequent version.*

6 Normal Communication Mode

6.1 T2S – TCP Server

In T2S mode, the CSE-H20 functions as a server.

When a host connects to predefined local port, the CSE-H20 accepts a TCP connection. When the ezTCP accepts TCP connection, then the TCP connection is established. After connection is established, TCP/IP processing is performed on the data coming to the serial port, which is then transmitted to the remote host. And the TCP/IP data coming from the remote host is TCP/IP-processed and transmitted to the serial port to establish data communication.



6.1.1 TCP Connection

If a host connects to the pre-defined [Local Port] of CSE-H20, the host can communicate bi-directionally.

6.1.2 Serial Data before the TCP Connection

The received serial data before the TCP connection is established will be handled based on the [Event Byte] settings. If the [Event Byte] is 0, the data that comes to serial port of CSE-H20 will not be recognized. If it is not 0, the serial data before TCP connection will be temporarily saved to be sent to the host after the connection.

6.1.3 Data Transmission

When the TCP connection is established, the data communication in between the host and the serial device will be established. Then, CSE-H20 will send data according to the [Data Frame]. In other words, when the data comes through CSE-H20's serial port, it will be temporarily saved in the buffer. Then, when there is no incoming data during the

designated [Data Frame], CSE-H20 will send the saved data. If the [Data Frame] is 0, CSE-H20 will send serial port's data immediately. The unit used for the [Data Frame] is 10m seconds, so CSE-H20 rounds down rest of the values.

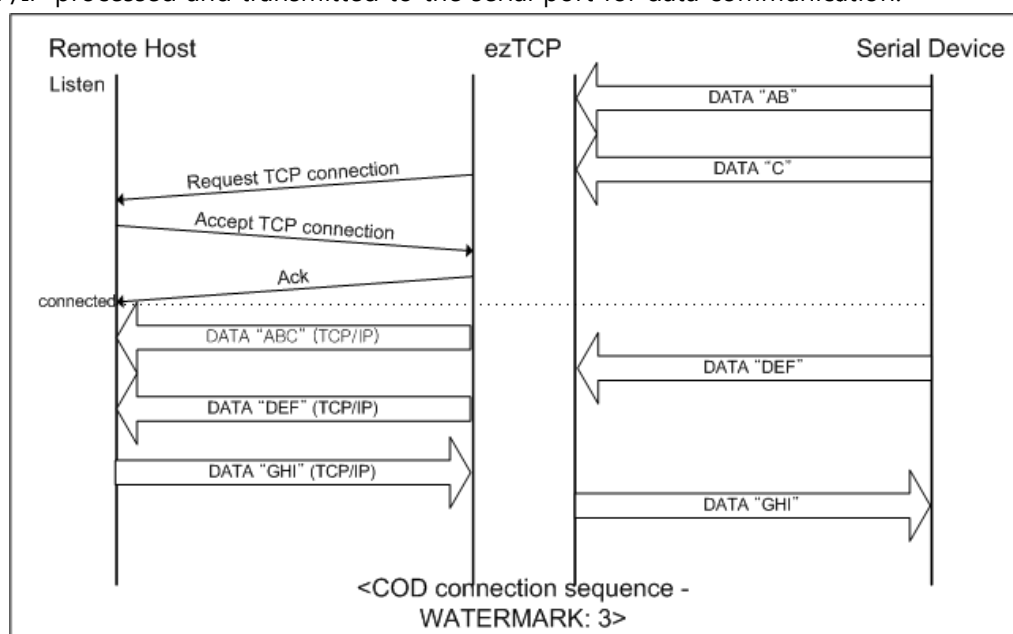
6.1.4 Disconnection

When the connected host terminates the connection, or there is no data communication during the designated [Timeout], the TCP connection will be automatically terminated. The unit used for [Timeout] is 1 second.

6.2 COD – TCP Client

In COD mode, the ezTCP functions as a client.

When data of the pre-specified size [Event Byte] comes to the serial port, the ezTCP attempts a TCP connection to the TCP port [Peer Port] of the preset host IP [Peer IP Address]. If the remote host accepts the TCP connection, TCP connection will be established. Data coming to the serial port after connection establishment is TCP/IP-processed and transmitted to the remote host. And, data coming from the remote host is TCP/IP-processed and transmitted to the serial port for data communication.



6.2.1 Serial Data before the TCP Connection

Data before TCP connection will be handled based on the [Event Byte] settings. If the [Event Byte] is 0, the data that comes to CSE-H20's serial port will not be recognized. If it is not 0, the serial data before TCP connection will be temporarily saved to be sent to the host after the connection.

6.2.2 Data Transmission

When the TCP connection is established, the data communication in between the host and the serial device will be established. Then, CSE-H20 will send data according to the [Data Frame]. In other words, when the data comes through CSE-H20's serial port, it will be temporarily saved in the buffer. Then, when there is no incoming data during the designated [Data Frame], CSE-H20 will send the saved data. If the [Data Frame] is 0, CSE-H20 will send serial port's data immediately. The unit used for the [Data Frame] is 10 milliseconds, so CSE-H20 rounds down rest of the values.

6.2.3 Disconnection

When the connected host terminates the connection, or there is no data communication during the designated [Timeout], the TCP connection will be automatically terminated. The

unit used for [Timeout] is 1 second.

6.2.4 DNS

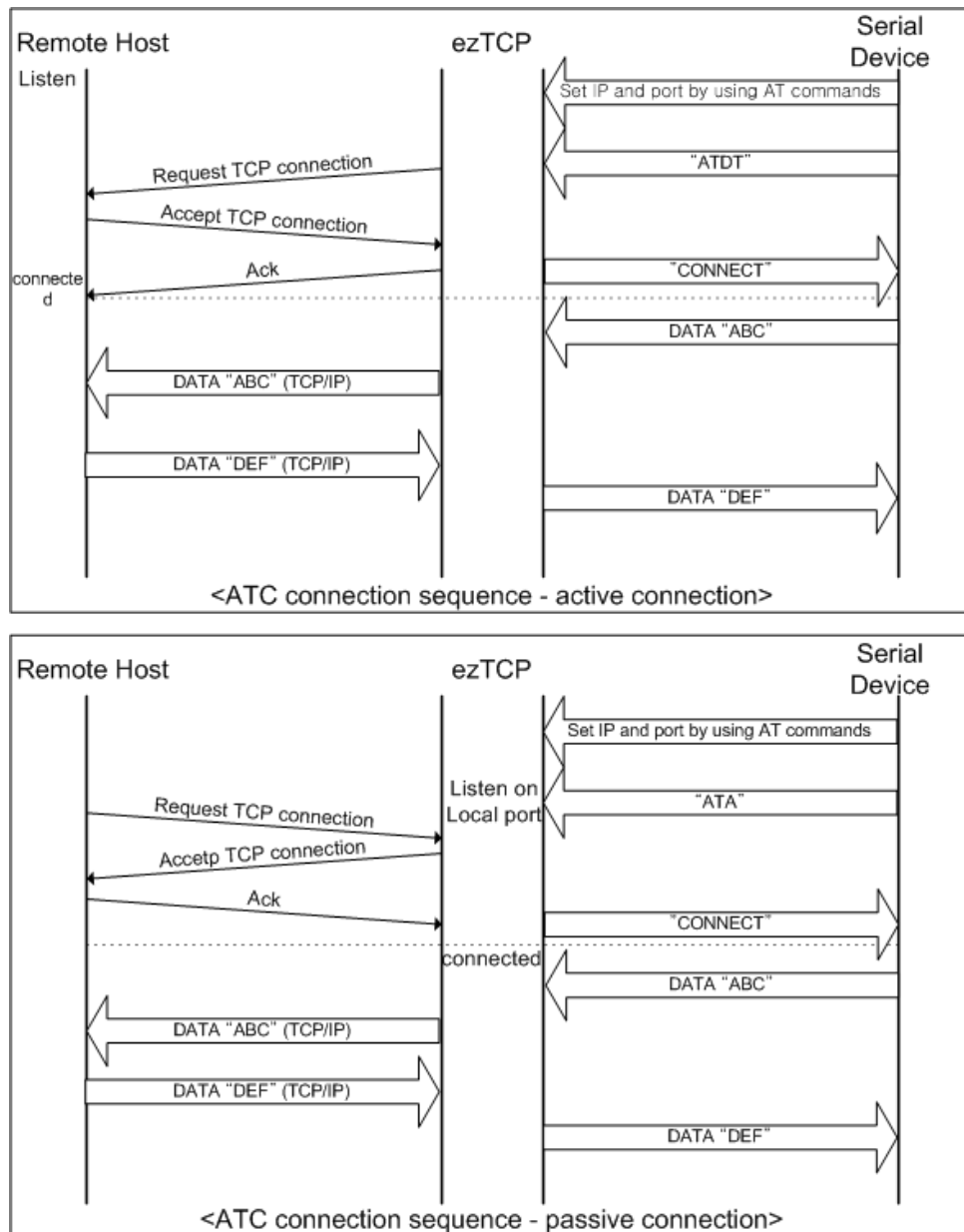
If users set the host name instead of the IP address on the [Peer Address] box, CSE-H20 query the IP address of the host to its Domain Name Server (DNS). The IP address of DNS can be configured on ezManager. If you set incorrect address on that box, the connection won't be established.



6.3 ATC – AT Command

In ATC mode, the user can control the CSE-H20 in a similar way to controlling the modem using AT command. In ATC mode, only a TCP connection is possible and both the server and the client can be configured.

In ATC mode, the AT command allows the user to set environment variables including the IP address and control TCP connection and disconnection.



☞ For detailed information on AT commands, please refer to the "7. ATC mode".

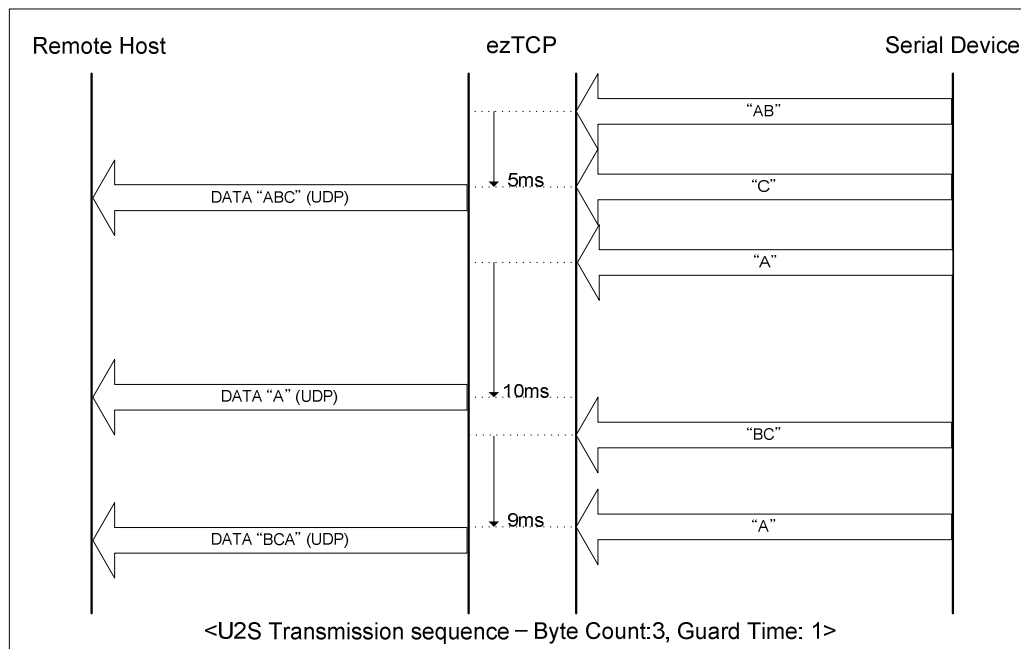
6.4 U2S – UDP

U2S is a mode that performs UDP communication.

In UDP communication, data is sent in block units. Therefore, data that comes through CSE-H20's serial port must be classified in block units to send it elsewhere. The block unit classification process is performed as the following.

When the amount of received data via CSE-H20 serial port is as same as previously designated data Event Byte, [Event Byte], or the duration of the data exceeds [Data Frame], the incoming data will be recognized as one block. This block will be sent to UDP. [Timeout] is in 10ms.

Since UDP communication does not involve establishing connection, N: M communication may be performed using broadcast. Therefore, it can be conveniently in changing RS 485 multi drop type network to Ethernet.



In addition, if the [Peer Address] and [Peer Port] are set to 0, U2S echo functions will be applied. This option allows it to send UDP packets according to the source IP address in the last packet which is received. By using this, CSE-H20 can send multiple hosts one by one. This function is available on 1.2H or subsequently released firmware version.

7 ATC Mode

7.1 Overview

CSE-H20 can be controlled by AT commands in ATC mode. For example, the peer host IP address can be set by AT+PRIP command and connect to the host by ATD command.

Therefore, CSE-H20 communicates several hosts alternatively.

And also, it provides passive connection function by ATA command.

7.1.1 AT command format

AT commands start with AT, and end <CR>.

AT command format is followed.

AT	Command	<CR>(0x0d)
----	---------	------------

The response code to AT command is followed.

<CR>(0x0d)	<LF>(0x0a)	Response message	<CR>(0x0d)	<LF>(0x0a)
------------	------------	------------------	------------	------------

Response Message

When ATV1 (initial setting)	When ATV0	Description
OK	0	command OK
CONNECT	1	TCP connected
NO CARRIER	3	TCP disconnected
ERROR	4	Command error
Set value	Set value	When query set value (example: AT+PRIP?)

7.2 Basic AT Command Set (Example: ATA, ATD etc.)

Command	Function	Description
A	passive connection	Listen connection (host → CSE-H20 connection)
D	active connection	Connecting to host from CSE-H20
E	echo	Echo (E0 – no echo, E1=echo)
H	off-hook	disconnection
I	Info	Output CSE-H20 related-information ATI3: the firmware version ATI7: MAC address
O	Online	To online mode

V	enable result code	Result code (numeric-V0, alphabetic-V1)
Z	reset	Reset

7.3 Extended AT Commands (Example: AT+PLIP etc.)

Command	Function	Description
+PLIP	local IP address	Needed AT+PWP after setting this parameter
+PSM	subnet mask	
+PGIP	default router	
+PLP	listening TCP port	
+PTO	timeout	
+PRIP	Remote machine IP address	
+PNIP	Name Server IP address	Setting the name server IP
+PRHN	Remote host name	Setting the peer host name to connect with double quotation. (at+prhn="www.sollae.co.kr") After setting this parameter, CSE-H20 queries the IP address according to the name, and set the IP address to the +PRIP parameter.
+PRP	Remote machine TCP port	
+PWP	Write configuration	Saving and Reset
+PARP	ARP setting function enable/disable	ON: 1, OFF: 0
+PDC	DHCP enable/disable	ON: 1, OFF: 0
+PSE	"+++" data transmission enable/disable when turn to AC command state	ON: 1, OFF: 0

7.4 Online State and AT Command State

It is AT command mode during disconnected. AT commands can be used in AT command mode. After TCP connection (Online Mode), AT commands cannot be used. To use AT commands during the connection, change state to AT command state.

AT Command State	During TCP disconnected, AT commands can be used To use AT commands during the connection, required escape sequence
Online State	During TCP connected, all serial data to CSE-H20 convert TCP and send to Ethernet

7.4.1 Changing Online State to AT Command State

To change online state to AT command state during the connection(Online State), +++ string should be transmitted to CSE-H20 as following time interval.

When transmitting +++ string to CSE-H20, +++ string will be sent to peer host.

The time from final data the first '+' data of '+++' string	No data over 500ms(guard time)
time intervals between '+'s	0~500ms
Time interval after receiving last '+'	No data over 500ms (guard time)

☞ In case of 1.3A or subsequent versions of F/W, users can select whether "+++" data is transmitted or not by using AT+PSE command.

7.4.2 Changing AT Command State to Online State

If CSE-H20's state is in AT command state during TCP connection, CSE-H20's state can be changed into online state by an ATO command.

7.5 Example of Configuration with AT Command

	Serial Port		Description
	AT+PLIP=192.168.1.200<CR>	▶	Setting LOCAL IP address
◀	<CR><LF>OK<CR><LF>		Command OK
	AT+PGIP=192.168.1.254<CR>	▶	Setting GATEWAY IP address
◀	<CR><LF>OK<CR><LF>		Command OK
	AT+PSM=255.255.255.0<CR>	▶	Setting SUBNET MASK
◀	<CR><LF>OK<CR><LF>		Command OK
	AT+PLP=1470<CR>	▶	Setting LOCAL PORT
◀	<CR><LF>OK<CR><LF>		Command OK
	AT+PTO=10<CR>	▶	Setting TIME OUT
◀	<CR><LF>OK<CR><LF>		Command OK
	AT+PWP<CR>	▶	Saving setting value to EEPROM Reset automatically
◀	<CR><LF>OK<CR><LF>		Command OK
◀	<CR><LF>NO CARRIER<CR><LF>		System Reset

7.6 Example of TCP Connection

7.6.1 Example of Active Connection

	Serial Port		Description
	AT+PRIP=192.168.1.201<CR>	▶	Setting remote IP address to connect
◀	<CR><LF>OK<CR><LF>		Command OK
	AT+PRP=1470<CR>	▶	Setting remote port number to connect
◀	<CR><LF>OK<CR><LF>		Command OK
	ATDT<CR>	▶	Connecting to the host
Attempting to connect to the host			
◀	<CR><LF>CONNECT<CR><LF>		TCP connection success
Data Communication			

7.6.2 Example of Active Connection with host name

	Serial Port		Description
	AT+PNIP=168.126.63.1<CR>	▶	Setting the name server's IP address to connect
◀	<CR><LF>OK<CR><LF>		Command OK
	AT+PRHN="www.sollae.co.kr"<CR>	▶	Setting the host name to connect After this command, CSE-H20 query the host name to the name server. After getting the IP address, it sets to the +PRIP parameter.
◀	<CR><LF>OK<CR><LF>		Command OK
	AT+PRP=1470<CR>	▶	Setting remote port number to connect
◀	<CR><LF>OK<CR><LF>		Command OK
	ATDT<CR>	▶	Connecting to the host
Attempting to connect to the host			
◀	<CR><LF>CONNECT<CR><LF>		TCP connection success
Data Communication			

☞ When being established the active TCP connection, the [Local] Port number may be changed to temporary values.

7.6.3 Example of passive Connection

	Serial Port		Description
	AT+PLP=1470<CR>	▶	Set LOCAL PORT to listen
◀	<CR><LF>OK<CR><LF>		Command OK
	ATA<CR>	▶	Passive connection command
Listen on local port from a host			

A host connects to CSE-H20			
◀	<CR><LF>CONNECT<CR><LF>		TCP connection OK
Data Communication			

7.7 Example of TCP Disconnection

7.7.1 Example of active disconnection

CSE-H20 disconnects the connection.

	Serial Port		Description
Data Communication(during TCP connection)			
	[Data Frame]+++[Data Frame]	▶	Changing online state to AT command state
◀	<CR><LF>OK<CR><LF>		Changed to AT command state
	ATH<CR>	▶	TCP disconnection command
◀	<CR><LF>OK<CR><LF>		Command OK

7.7.2 Example of passive disconnection

The remote host disconnects the connection.

	Serial Port		Description
Data Communication(during TCP connection)			
The remote host disconnect the connection			
◀	<CR><LF>NO CARRIER<CR><LF>		TCP disconnected

8 Security Protocols & Option

8.1 SSL

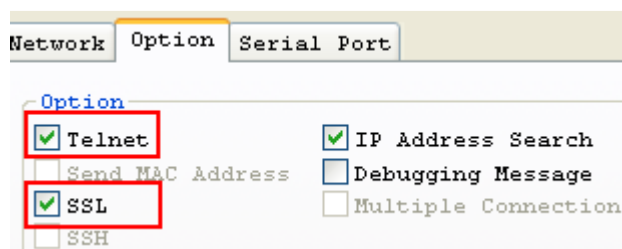
8.1.1 SSL (Secure Socket Layer)

SSL is cryptographic protocol that provides secure communication on the Internet. The SSL works over TCP.

8.1.2 How to set the SSL on CSE-H20

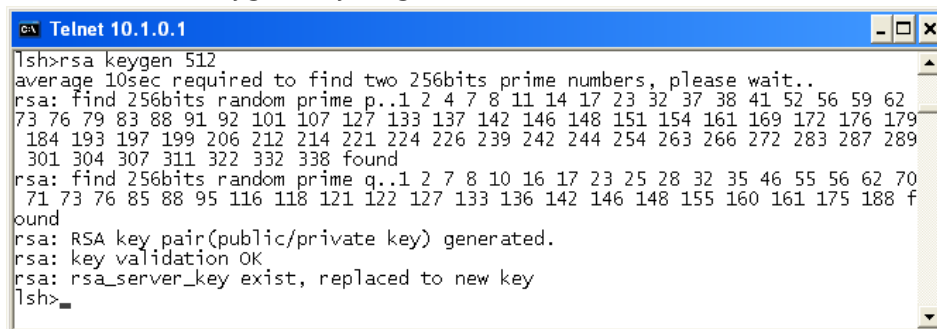
To works for SSL, you have to set the SSL-related parameters as the following steps.

- Set the [SSL] check box in the ezManager.

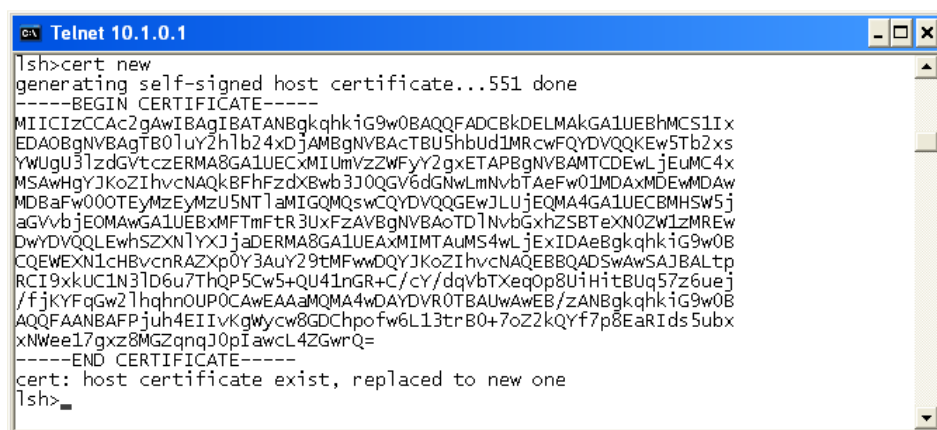


- Log in the CSE-H20 with telnet client.
- Generate an RSA key with a command. CSE-H20 supports 512, 768, and 1024 length keys.

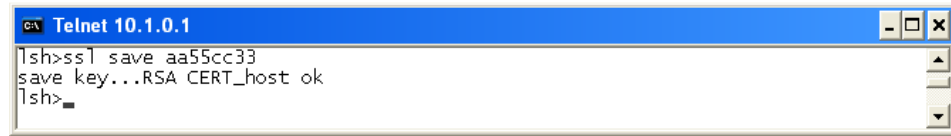
Command Format: `rsa keygen [key length]`



- Make a certificate with a 'cert new' command. The certificate is a self signed.



- Save the parameters for SSL with a 'ssl save aa55cc33' command.



```

C:\> Telnet 10.1.0.1
lsh>ssl save aa55cc33
save key...RSA CERT_host ok
lsh>

```

8.1.3 Restriction

To use the SSL with CSE-H20, there is a restriction. You can use only one serial port (COM1) if you set the SSL function.

8.2 SSH

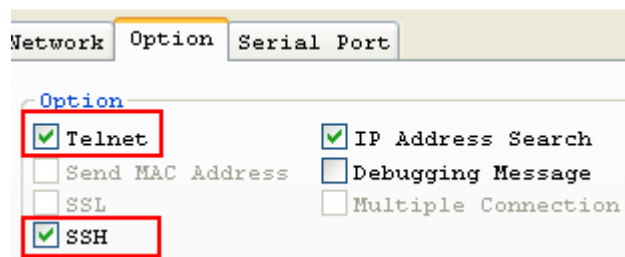
8.2.1 SSH (Secure Shell)

SSH is a network protocol that allows secure communications between two devices. You can use this function if your device is a serial port for console and you need secure communication.

8.2.2 How to set the SSH on CSE-H20

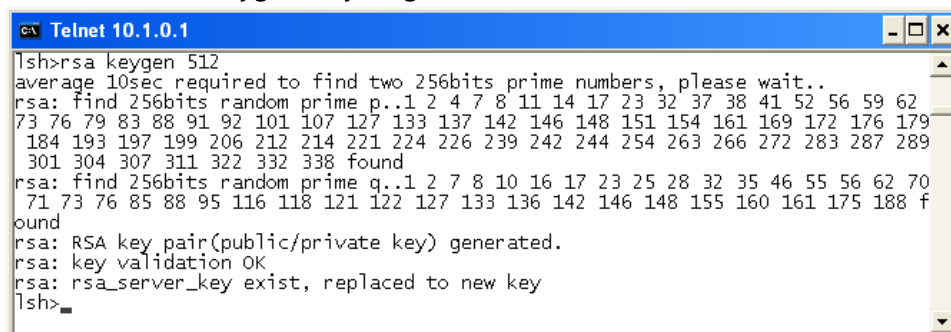
To works for SSL, you have to set the SSH-related parameters as the following steps.

- Set the [SSH] check box in the ezManager.



- Log in the CSE-H20 with telnet client.
- Generate an RSA key with a command. CSE-H20 supports 512, 768, and 1024 length keys.

Command Format: rsa keygen [key length]



```

C:\> Telnet 10.1.0.1
lsh>rsa keygen 512
average 10sec required to find two 256bits prime numbers, please wait..
rsa: find 256bits random prime p..1 2 4 7 8 11 14 17 23 32 37 38 41 52 56 59 62
73 76 79 83 88 91 92 101 107 127 133 137 142 146 148 151 154 161 169 172 176 179
184 193 197 199 206 212 214 221 224 226 239 242 244 254 263 266 272 283 287 289
301 304 307 311 322 332 338 found
rsa: find 256bits random prime q..1 2 7 8 10 16 17 23 25 28 32 35 46 55 56 62 70
71 73 76 85 88 95 116 118 121 122 127 133 136 142 146 148 155 160 161 175 188 f
ound
rsa: RSA key pair(public/private key) generated.
rsa: key validation OK
rsa: rsa_server_key exist, replaced to new key
lsh>

```

- Generate a DSA key with a 'dsa keygen'.

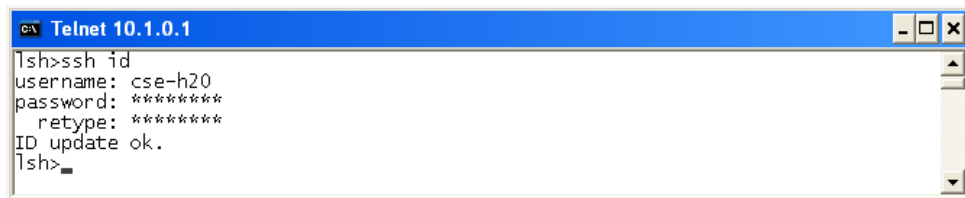


```

C:\> Telnet 10.1.0.1
lsh>dsa keygen
generating fips186 dsa key...done
verifying...done
lsh>

```

- Set a username and a password to log in with a 'ssh id' command for the SSH.

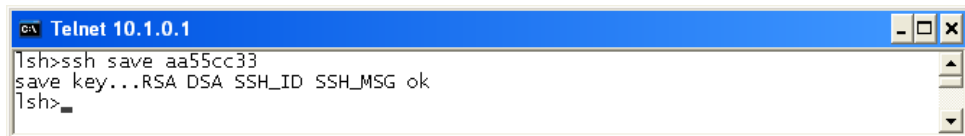


```

C:\ Telnet 10.1.0.1
lsh>ssh id
username: cse-h20
password: *****
retype: *****
ID update ok.
lsh>

```

- Save the parameters for SSH with a 'ssh save aa55cc33' command.



```

C:\ Telnet 10.1.0.1
lsh>ssh save aa55cc33
save key...RSA DSA SSH_ID SSH_MSG ok
lsh>

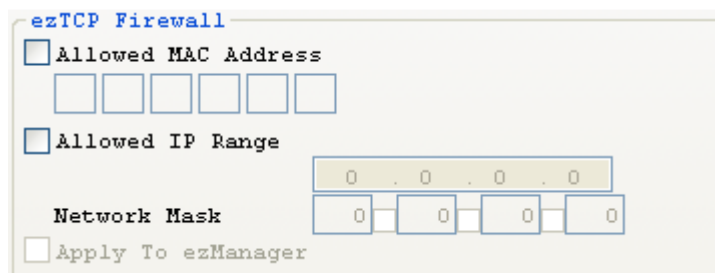
```

8.2.3 Restriction

To use the SSH function with CSE-H20, there is a restriction. You can use only T2S mode (TCP Server mode) if you set the SSH function

8.3 ezTCP Firewall

CSE-H20 has two connection limitation functions. Those can be set by the [Option] tab of the ezManager.



ezTCP Firewall

☐ Allowed MAC Address

☐ Allowed IP Range

Network Mask

☐ Apply To ezManager

- Allowed MAC Address

If user sets the [Allowed MAC Address], the only specified host can be connected with the CSE-H20.

- Allowed IP Range

When the [Allowed IP] is set, the only hosts that are specified by [Allowed IP] and [Network Mask] can connect to the CSE-H20.

- examples

Allowed IP	Net Mask	Hosts who can connect to the CSE-H20
10.1.0.1	255.0.0.0	10.1.0.1 ~ 10.255.255.254
10.1.0.1	255.255.255.0	10.1.0.1 ~ 10.1.0.254
192.168.1.4	255.255.255.255	192.168.1.4

- Apply to ezManager

If this option is checked, hosts who are not specified above two restrictions can't search

and configure CSE-H20 with ezManager. This is enabled when one of restrictions is set at least.

☞ *All security functions are disabled in the ISP mode. So user can access the CSE-H20 in the ISP mode even though user can't access the CSE-H20 in the normal mode because of the [ezTCP Firewall] function.*

9 Checking & Debugging

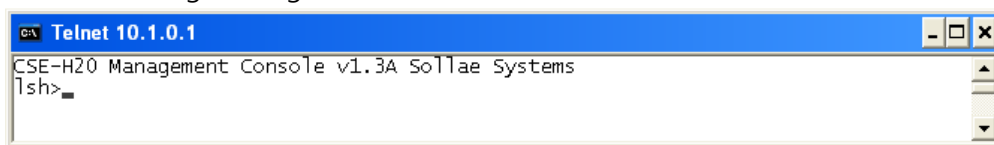
If user logs in the CSE-H20, user can monitor CSE-H20 status. And if user sets the debugging option, user can get debugging data with ezManager.

9.1 Telnet

9.1.1 Telnet Login

If the [Telnet] parameter is set, user can log in the CSE-H20. User can monitor the status of the serial ports and the network.

If user inputs "telnet [CSE-H20 IP Address]", user can log in the CSE-H20 with telnet. Then the following message will be shown.



```

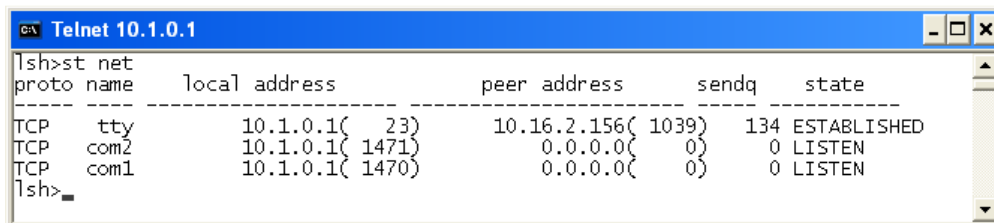
C:\ Telnet 10.1.0.1
CSE-H20 Management Console v1.3A Sollae Systems
lsh>

```

9.1.2 Commands

- Network Status

User can monitor network status of CSE-H20 with the "st net" command.



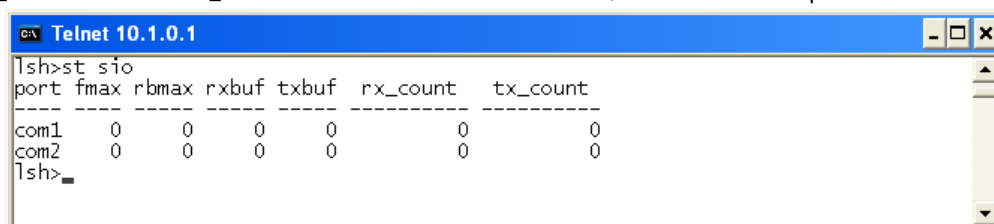
```

C:\ Telnet 10.1.0.1
lsh>st net
proto name      local address      peer address      sendq      state
-----
TCP   tty          10.1.0.1( 23)      10.16.2.156( 1039) 134 ESTABLISHED
TCP   com2          10.1.0.1( 1471)     0.0.0.0( 0)       0 LISTEN
TCP   com1          10.1.0.1( 1470)     0.0.0.0( 0)       0 LISTEN
lsh>

```

- Serial Ports' Status

User can monitor the statuses of two serial ports with the "st sio" command. The tx_count and the rx_count are the total data sizes to/from the serial ports.



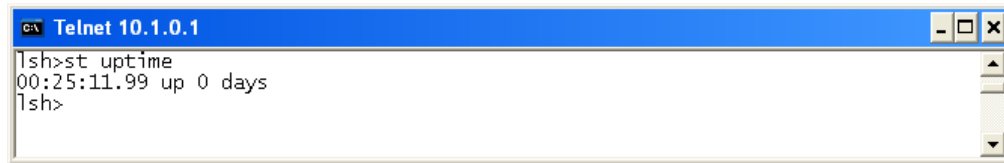
```

C:\ Telnet 10.1.0.1
lsh>st sio
port fmax rbmax rxbuf txbuf rx_count tx_count
-----
com1  0    0    0    0         0         0
com2  0    0    0    0         0         0
lsh>

```

- Checking Uptime

With "st uptime" command, you can check the time of your device boots up.



```

C:\ Telnet 10.1.0.1
lsh>st uptime
00:25:11.99 up 0 days
lsh>

```

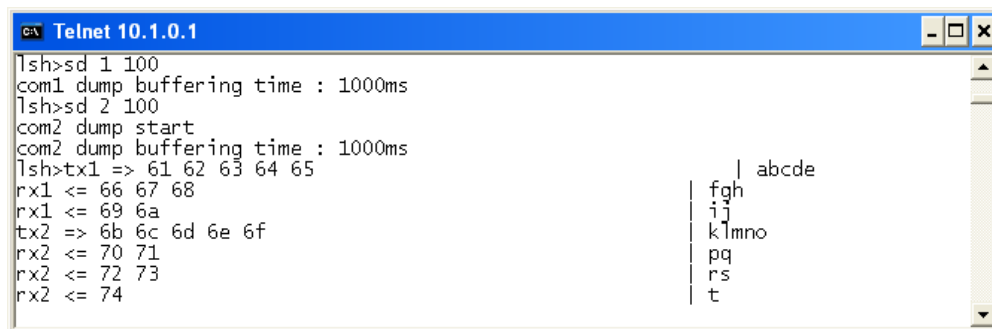
- Serial Ports I/O data capture

This command is available on 1.2H or subsequently released firmware version. User can monitor the input / output data of CSE-H20's serial ports with the "sd" command. The way of using this command is like below.

"sd [SPACE] [# of Serial Port] [SPACE] [Interval]"

The value of [# of Serial Port] is that COM1 is "1" and COM2 is "2". [Interval] means duration of capturing and printing data on your screen and its unit is mille second (ms).

For example, if you want to capture the data in every second, the value of [Interval] should be 100.



```

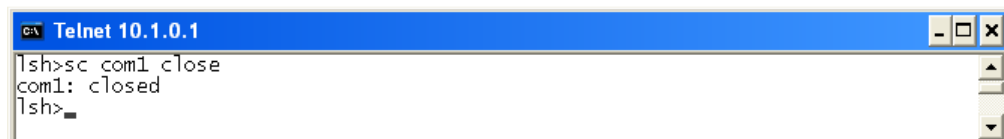
C:\ Telnet 10.1.0.1
lsh>sd 1 100
com1 dump buffering time : 1000ms
lsh>sd 2 100
com2 dump start
com2 dump buffering time : 1000ms
lsh>tx1 => 61 62 63 64 65
rx1 <= 66 67 68
rx1 <= 69 6a
tx2 => 6b 6c 6d 6e 6f
rx2 <= 70 71
rx2 <= 72 73
rx2 <= 74

```

- Termination of TCP connection

Using "sc" command, users can terminate established TCP connection. The way of using this command is like below.

"sc [SPACE] [Name of Serial Port] [SPACE] close"



```

C:\ Telnet 10.1.0.1
lsh>sc com1 close
com1: closed
lsh>

```

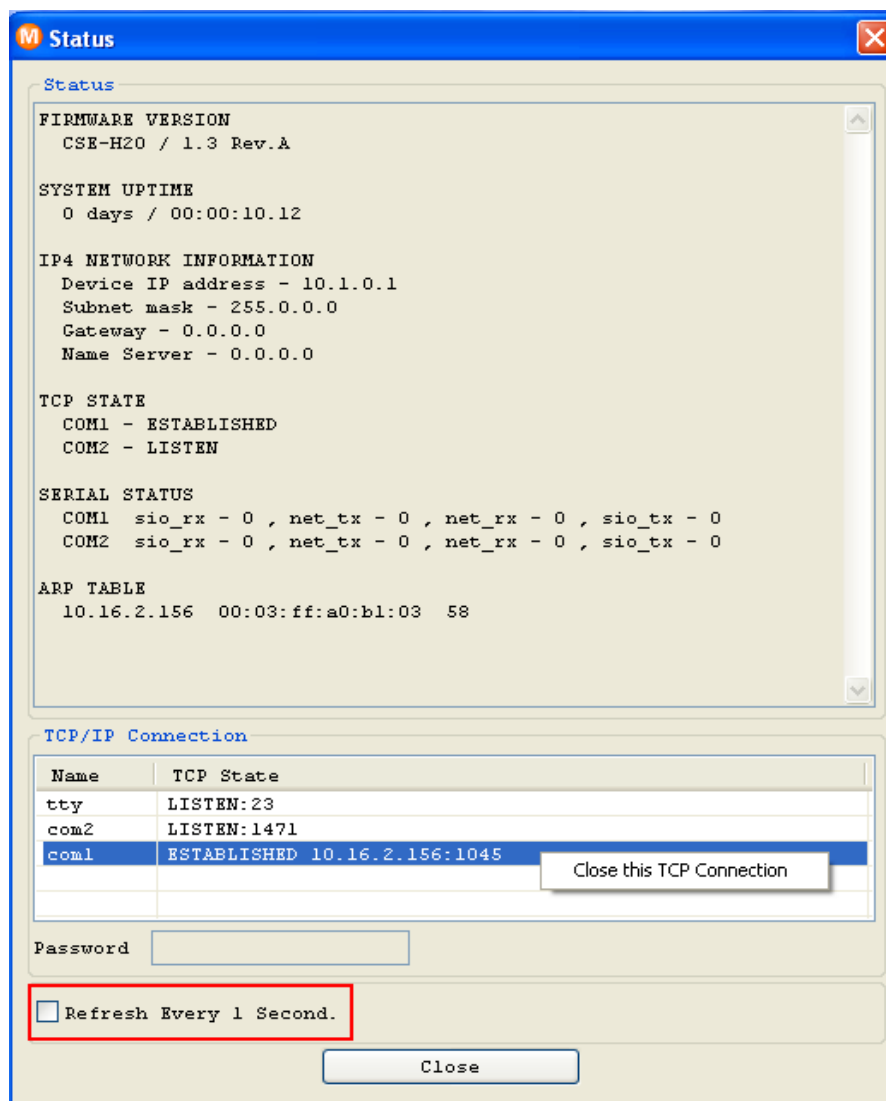

9.2 Status on ezManager

9.2.1 Status of the CSE-H20

If the [Status] button is pressed on ezManager, user can monitor the current status of the CSE-H20 with ezManager. If user sets [Refresh Every 1 second] option, the status data will be updated in every second.

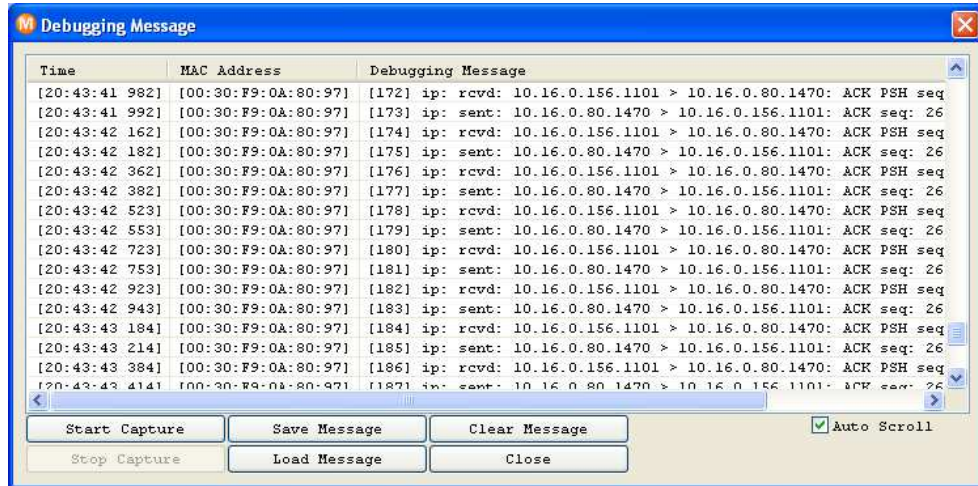
9.2.2 Closing TCP connection by the ezManager

User can terminate a TCP connection with the status window of the ezManager. If user clicks the right button of each TCP connection message of the TCP/IP Connection, user can terminate the TCP connection.



9.3 Remote Debugging

If the [Debugging Message] field in the [OPTION] tab of the ezManager, CSE-H20 transmits debugging messages with UDP port 50006. Then user can get the messages with new window if user presses [Debugging Message] button as followed:



This function is very useful when there are any problems when users install the CSE-H20 in the user site.

10 Technical Support, Warranty, and Notes on Operation

10.1 Technical Support

If you have any question regarding operation of the product, visit Customer Support FAQ corner and the message board on Sollae Systems' web site or send us an email at the following address: support@eztcp.com

Website Address for Customer Support:

<http://www.eztcp.com/en/Support/support.php>

10.2 Warranty

10.2.1 Refund

Upon the customer's request to refund the product within two weeks after purchase, Sollae Systems will refund the product.

10.2.2 Free Repair Services

For product failures occurring within one year after purchase, Sollae Systems provides free repair services or exchange the product. However, if the product failure is due to user's fault, repair service fees will be charged or the product will be replaced at user's expense.

10.2.3 Charged Repair Services

For product failures occurring after the warranty period (one year) or resulting from user's fault, repair service fees will be charged and the product will be replaced at user's expense.

10.2.4 Notes on Operation

- Sollae Systems is not responsible for product failures occurring due to user's alternation of the product.
- Specifications of the product are subject to change without prior notice for performance improvement.



- Sollae Systems does not guarantee successful operation of the product if the product was used under conditions deviating from the product specifications.
- Reverse engineering of firmware and applications provided by Sollae Systems is prohibited.
- Use of firmware and applications provided by Sollae Systems for purposes other than those for which they were designed is prohibited.
- Do not use the product in an extremely cold or hot place or in a place where vibration is severe.
- Do not use the product in an environment in which humidity is high or a lot of oil exists.
- Do not use the product where there is caustic or combustible gas.
- Sollae Systems does not guarantee normal operation of the product under the conditions a lot of noise exists.
- Do not use the product for a purpose that requires exceptional quality and reliability relating to user's injuries or accidents – aerospace, aviation, health care, nuclear power, transportation, and safety purposes.
- Sollae Systems is not responsible for any accident or damage occurring while using the product.

11 Revision History

Date	Version	Comment
Jan.15.2007	0.5	Initial touch
Feb.22.2007	1.0	Initial release
Aug.31.2007	1.1	Add Serial Interface Add Telnet COM Port Control Option
Sep.27.2007	1.2	Add DDNS(Dynamic DNS) function
Dec.04.2008	1.3	Add SSL, SSH function Modify ISP- pin function Modify RTS/CTS Flow-control Modify Test Method Add AT+PNIP, AT+PRHN Add Connect with a host name in ATC Mode Add Close TCP function
Jan.07.2009	1.4	Add security function in the ISP mode
Mar.04.2009	1.5	Add description of serial I/O data capture by using telnet.(sd command) Add description of U2S echo Correct Some Expressions
Mar.31.2009	1.6	Modify the table of 2.3.4. System LEDs Modify the table of 7.7.1 Modify 10.1 Technical Support Correct Some Expressions
Apr.21.2009	1.7	Modify the table of 2.3.4. System LEDs
Jul.13.2009	1.8	Add description of Send MAC Address function Add description of AT+PSE command Add description of changing local port in ATC mode Add description of Termination of TCP connection in 9.1.2 Update most of pictures including ezManager and Telnet Modify the 4.2 Configuration with ezManager Modify the description about F/W upgrade Modify the 4.6 Notify IP change Change the form of document Correct some expressions