



4.3-inch front view

Module Specifications

Product Number: 51-0007
 Reach Board Model: SLCD43
 Display Manufacturer: LG Philips
 Display Type: TFT
 Colors: 65,536
 Display Viewing Area (mm): 53.9(H) x 95.0(W)
 Portrait Mode Option: Yes
 Horizontal Viewing Angle (degrees): 130 (typ.)
 Vertical Viewing Angle (degrees): 60 (Top) 50 (Bottom) (typ.)
 Screen Resolution: 480x272 (WQVGA)
 Display Brightness (cd/m2): 350 (typ.), with touch
 Contrast Ratio: 400:1 (typ.)
 Touch Panel Type: Resistive
 Operating Temperature: -20°C to 70°C
 Storage Temperature: -30°C to 70°C
 Supply Power: 5VDC±10% 450mA max.
 Interface Connector: Molex 53261 series
 Serial Interface: RS232 / 3.3V CNIS
 Backlight Display: LED
 Number of Serial Ports: 3
 USB Port: Yes
 Flash Memory: 4MB
 RoHS: Yes

See mechanical drawings on page two for physical dimensions of the SLCD43 board and side view of the 4.3-inch module.

4.3-inch color touch display module provides ease-of-use and competitive pricing

The 4.3-inch display module allows you to take advantage of competitive pricing for a popular LCD size being used by top portable gaming systems, GPS navigation, and other hand-held devices.

The module comes complete with controller board, LCD, and touch screen. Reach's display module technology and simple-to-use programming tools make GUI interface and integration easy. This helps reduce time-to-market and development costs.

The 4.3-inch LCD is an ideal size for a broad range of control surfaces, from 2U panel mount equipment to portable devices. The slim and solid design offers a wide viewing angle in all directions and a high bright option makes it suitable for demanding applications.

Get fast results with a low-risk development kit.

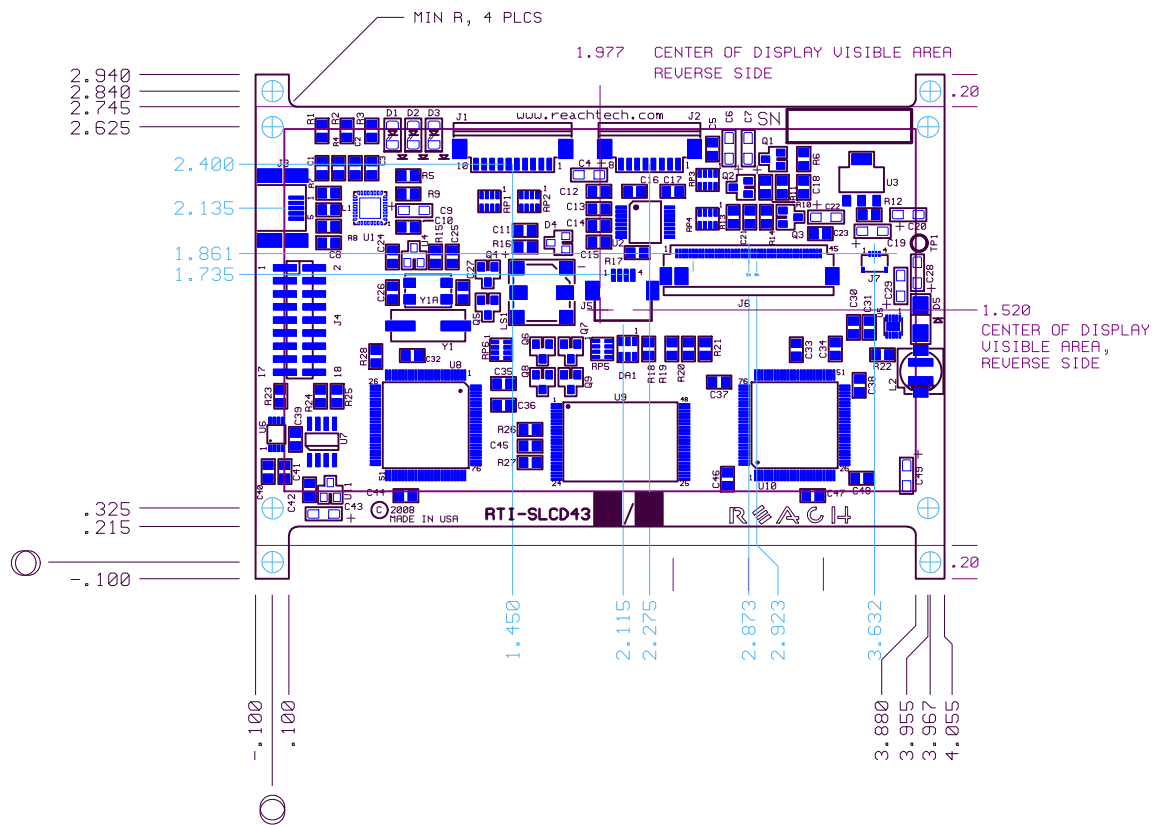
The 4.3-inch kit (product number 52-0006) contains everything you need to get a touch interface up and running in a matter of days. Kit includes cables, sample images, sample code, power supply, and technical support.

Call sales at 510-770-1417 or email sales@reachtech.com for more information or to order.



4.3-inch rear view

SLCD43 Board Physical Dimensions



SLCD43 Board and Panel Side View

